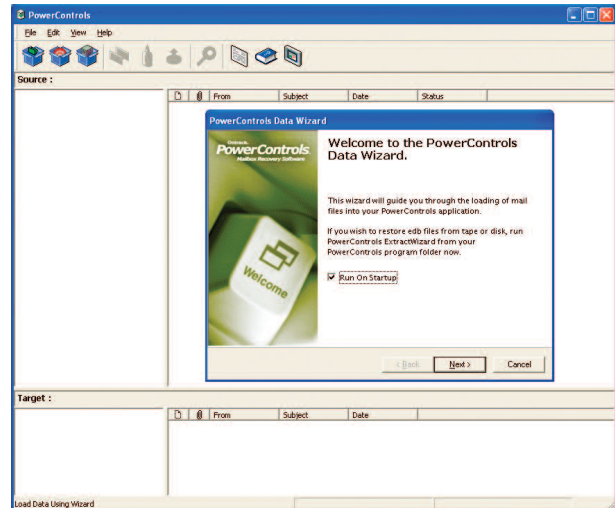


Ontrack® PowerControls™ is a simple, yet powerful tool for copying and searching mailbox data directly from an un-mounted Exchange database (EDB) file. Taking advantage of our nearly 20 years of data recovery experience, PowerControls uses that knowledge to help storage managers and network, email, and help desk administrators better serve their internal clients.

Let's face it, not every request to restore email files and messages is an emergency – you end up saying "no" more than you would like. PowerControls will help you efficiently and effectively meet these requests, allowing you to easily extract from EDB files and Exchange backups.

Working with your existing Exchange backup software, PowerControls quickly and easily restores message-level items from any previous full backup. After all, a backup program is really only as good as its ability to restore lost data. No more need for time consuming and expensive single mailbox or "brick-level" backups. Just perform a full backup of your Exchange server and let PowerControls restore individual mailboxes, folders, attachments, calendar items, or any number of duplicate or unique messages directly to your production Exchange server or any PST file.

The easy-to-use interface allows you to drag and drop mailboxes and messages from source to destination. For larger restoration or export tasks, PowerControls features a command line interface allowing you to easily batch repetitive processes such as multiple copy and export without the need to initiate



the software. Plus, PowerControls allows you to open multiple sources and destinations including EDB and PST files simultaneously. Featuring these and many other usage and security preferences and settings, it's easy to customize PowerControls to fit your specific needs.

Not only is PowerControls an invaluable recovery tool, but a powerful searching tool as well. You can easily search messages for keywords or criteria directly from an un-mounted EDB file without having to restore them to an Exchange server first. Archived email can be searched by matching keywords, excluding keywords, dates, senders, subjects, and recipients. PowerControls also allows you to selectively search in the Message Subject, Message Body, or Attachment File Name.

PowerControls gives you the freedom to easily search and restore email items, allowing you to slash your restore time and meet the needs and requests of all your internal clients. Say no to the need for recovery servers and brick-level backups. Say yes to PowerControls today!



## Who needs PowerControls?

Are you responsible for storage of email and backup, managing your company's LAN, WAN and firewall access points for email? Do you maintain your company's email accounts and database? Do you field the calls from users with email problems? PowerControls can help YOU!

## How do you benefit from PowerControls?

*Minimize the amount of storage space and the cost required to store and archive your backups.*

PowerControls eliminates the need to backup mailboxes individually, thereby completely eliminating the backup space, cost, and time associated with performing brick-level backups.

*Greatly reduce the time required to restore an individual mailbox.*

PowerControls restores mail items from a previous full backup directly into the production Exchange server or directly into a new or existing PST file, thereby eliminating the extra steps required to separately import mail back into Exchange or Outlook.

*Virtually eliminate the time it takes to backup the information store.*

PowerControls completely eliminates the need to backup mailboxes individually. In other words, most companies today will perform a full Exchange backup as normal and then run a second process to backup "Very Important Mailboxes (VIM)" individually. PowerControls eliminates this second process completely.

*Minimize the time it takes to locate all emails matching specific criteria – keywords, specific user(s), subject, date.*

PowerControls has an Advanced Find feature that can search across all mailboxes in an archive EDB file, rather than searching one mailbox at a time or bringing an old backup back online for analysis.

*Cut the time it takes to backup an individual mailbox to ZERO.*

PowerControls takes zero time to do this because we've completely eliminated the need for this step!

### PowerControls System Requirements

To connect and use PowerControls software, you need the following hardware and software:

- Windows 2000 Server, Windows 2000 Professional, Windows XP Home or Professional, or Windows 2003 Server
- Microsoft® Outlook 2000 or later
- Pentium-class processor
- 256 MB RAM
- 150 MB of free hard disk space for installation (more disk space will be needed for processing log files when opening and EDB file)
- Monitor with 800x600 or higher screen resolution

*Note: PowerControls supports Microsoft Exchange Server 5.5, 2000 or 2003.*

Copyright © 2006 Kroll Ontrack Inc. All rights reserved. All products and brand names mentioned are trademarks or registered trademarks of their respective holders.

To use PowerControls you will need access to a complete EDB file. To quickly restore a previous EDB from tape, we offer the recommendations below.

Backup Product	Version	Recommendation
Microsoft NT Backup	All versions	(1) or (3)
Veritas BackupExec	All versions	(1) or (3)
Veritas NetBackup	Exchange 5.5	(1) or (2)
Veritas NetBackup	Exchange 2000 or 2003	(1) or (3)
Legato NetWorker	All versions	(1) or (3)
Computer Associates ARCserve	Agent for Exchange with Open File Agent	(1) or (3)
Computer Associates ARCserve	Agent for Exchange	(1) or (3)
IBM Tivoli Storage Manager	All versions	(1) or (3)
HP OpenView Storage Data Protector	All versions	(1) or (3)
CommVault Galaxy	All versions	(1) or (3)
UltraBac	All versions	(1) or (3)
Other	All versions	(1) if MTF or BKF format (2) or (3) or (4)

**(1)** Use PowerControls ExtractWizard to restore to an alternate location that is not an Exchange Server, then use PowerControls to read the EDB.

**(2)** Use Backup Software to restore to an alternate location that is not an Exchange Server, then use PowerControls to read the EDB.

**(3)** Use Backup Software to restore to a Recovery Server (duplicate Exchange Server), then use PowerControls to read the EDB.

**(4)** If Backup Software incorporates an Exchange Server volume mirroring technology, then use PowerControls to read the offline snapshot of the EDB.

