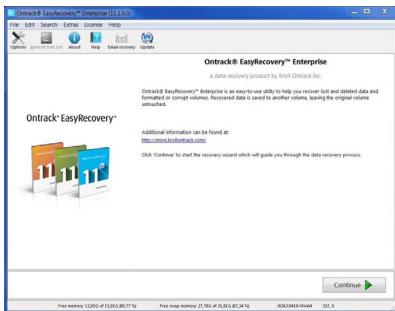
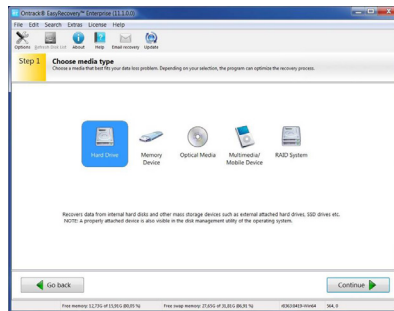


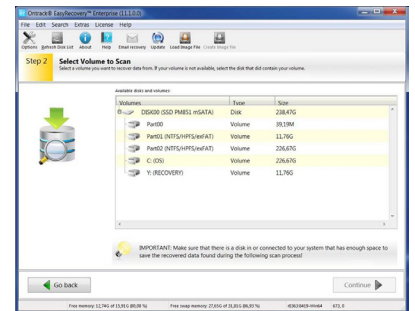
# Easy Recovery Professional Quick Guide



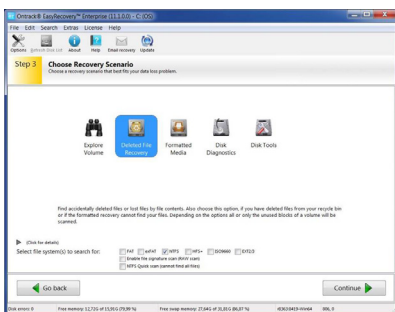
**Startup screen shows the version.**  
Enterprise / Professional / Home



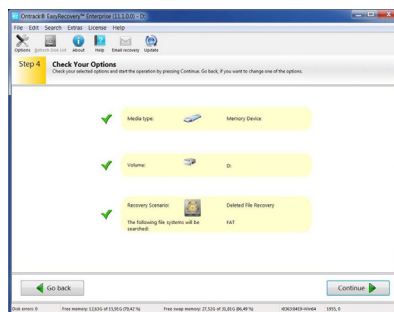
**Step 1**  
Choose the media type to be recovered. After choosing the media type a description with additional information appears below it.



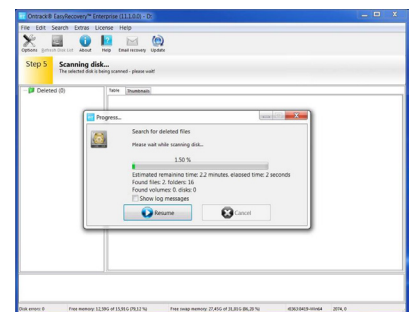
**Step 2**  
Select volume to scan from the chosen media. Or a disk if volume is not available. See also the important tip.



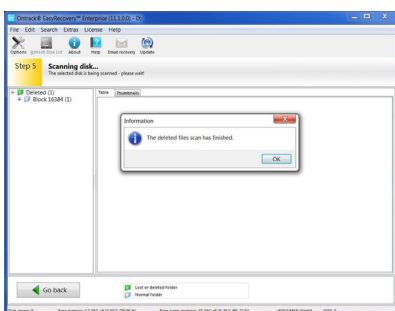
**Step 3**  
Choose the scenario which is best related to the problem. Each scenario has a self-explanatory description. Select also the file system or systems for the scan on the bottom.



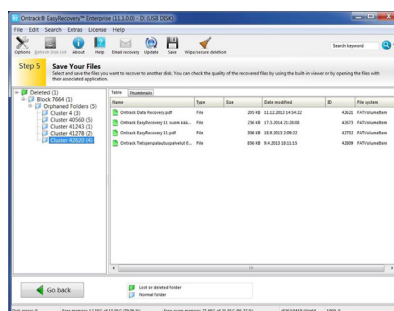
**Step 4**  
Typical summary page of selected options. Shown before starting the selected process



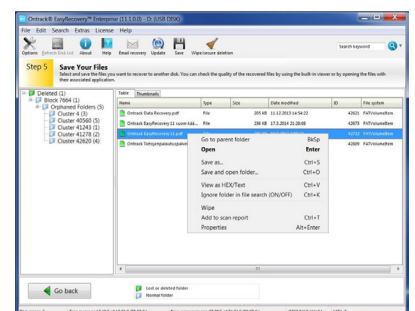
**Step 5**  
Scanning of the files if the chosen recovery scenario was  
 >> Explore Volume  
 >> Deleted File Recovery  
 >> Formatted Media



**Step 6**  
Result of the scanning if the chosen recovery scenario was  
 >> Explore Volume  
 >> Deleted File Recovery  
 >> Formatted Media



**Step 7**  
Result of the scanning if the chosen recovery scenario was  
 >> Explore Volume  
 >> Deleted File Recovery  
 >> Formatted Media  
 List of the files and folders that are found



**Step 8**  
Choose the action to be taken. Save the missed files and folders